

ADVANCE

Easy Moving 

17

ASSEMBLY, USE AND MAIN-
TENANCE MANUAL

DISPENSER TANK





INSTRUCTION MANUAL

- Type: feeding system for solid fuel boilers
- Model: Dispenser
- Revision 1.0.1

DISPENSER MAXI

INDEX

1	INTRODUCTION	4
	1.1 Utilizzo del manuale	4
2	WARNINGS	4
3	TECHNICAL DATA, EXPLODED VIEW DRAWINGS AND DIMENSIONS	5
	3.1 Identification plate	7
4	PACKAGING CONTENT	7
5	PROPER USE OF THE PRODUCT	8
6	INSTALLATION	8
	6.1 Positioning	8
	6.2 Warning for installations on controlled pressure tanks	10
	6.3 Connection to the piping network	11
7	PRINCIPLES OF OPERATION	12
	7.1 Start up and use	12
8	MAINTENANCE AND END-OF-LIFE	14
	8.1 End-of-life	14
9	SAFETY REQUIREMENTS FOR FUEL STORAGE TANKS	15
10	WARRANTY	16
11	CERTIFICATION	17

1 INTRODUCTION

Dear customer,
the manufacturer would firstly like to thank you for the choice you made in buying an product, whose technical features will certainly meet Your needs.
Our products have been designed and manufactured in total compliance with the current regulations, by choosing the best materials to obtain durability and ease of use of the product.
We ask you, therefore, to read this manual carefully and completely, following strictly the instructions contained herein.

1.1 USE OF THIS MANUAL

The instruction manual is a document drawn up by the manufacturer and is part of the product: it integrates the specific rules of application and general rules for people, animals and objects safety. In the event that the product is resold, handed over, rented or sold to others, it must always be accompanied by this manual; therefore, it is recommended to use and keep it with care for the entire operative life of the product.

The main objective of this manual is to make known the proper and safe way to use the equipment. No part of this manual may be reproduced, copied, or shared in any way, without the written permission of the manufacturer.

The manufacturer reserves the right to make improvements or modifications to this manual and to the equipment at any time, without obligation to advise third parties.

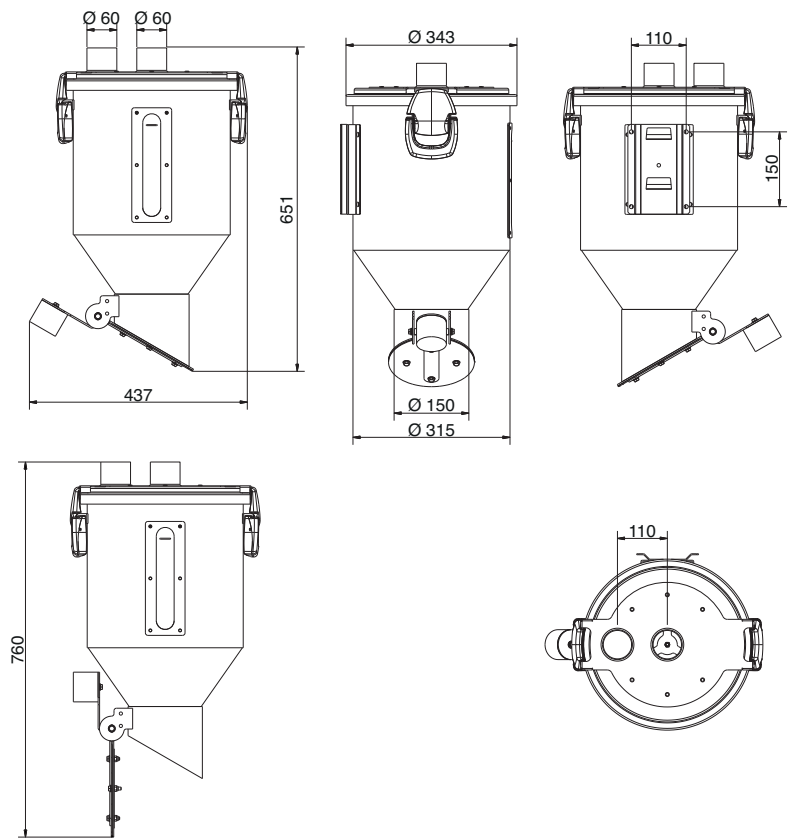
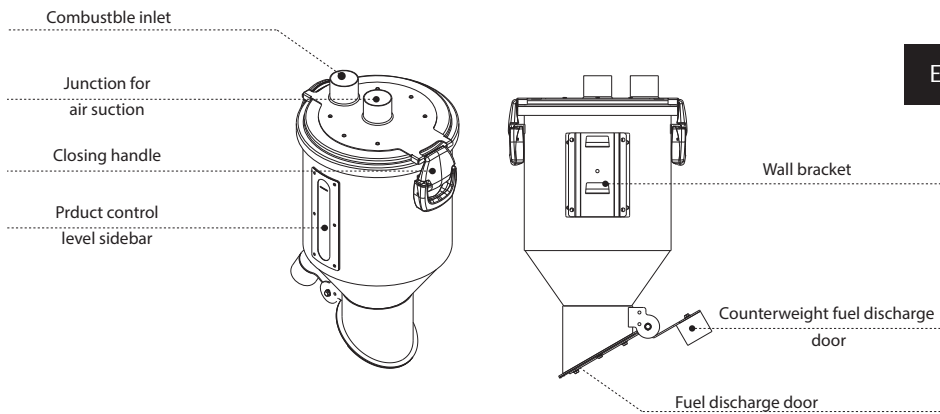
2 WARNINGS

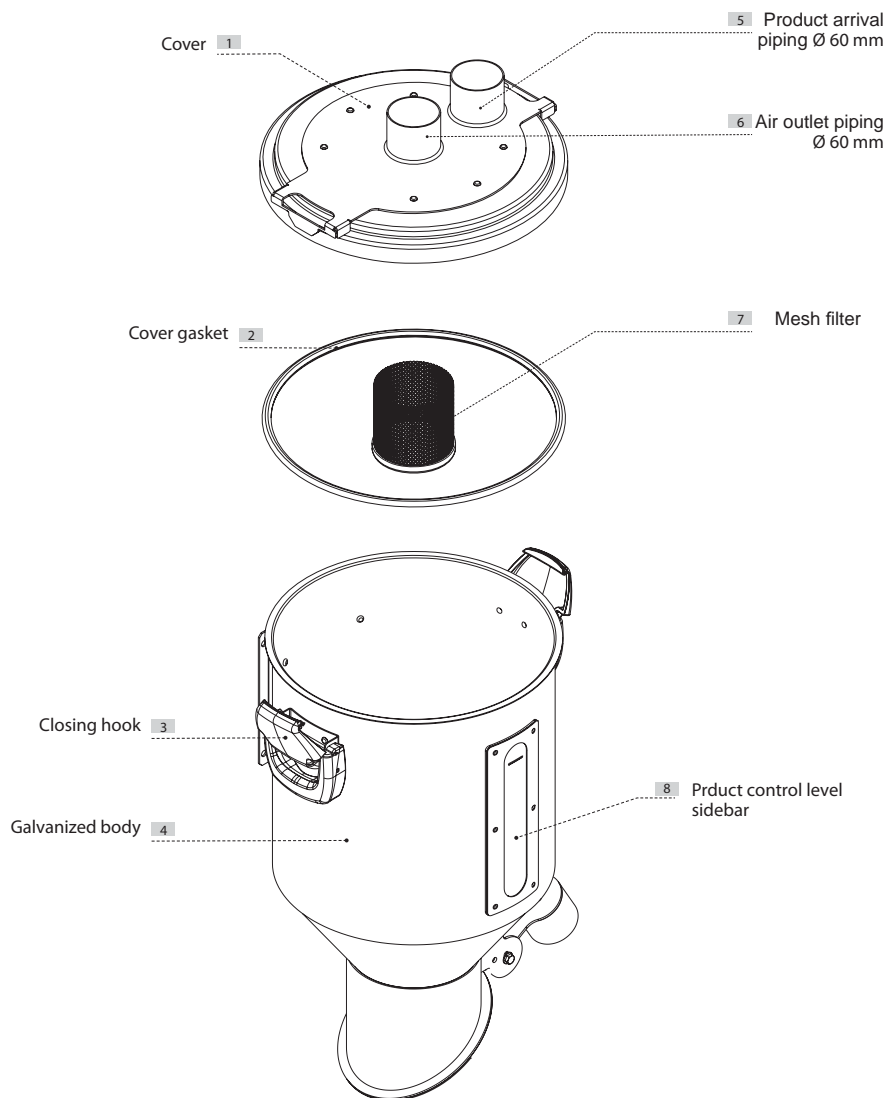
- Do not use the machine for any improper use.
- Do not let children near the machine.
- This unit must not be used by people (including children) with reduced physical, sensory or mental capabilities, or with lack of experience and knowledge, unless they are supervised or instructed in the use of the unit by a person responsible for their safety.
- Use only original spare parts.

The manufacturer declines any liability or guarantee, if the buyer or anyone makes changes or even minor

3 TECHNICAL DATA OF THE EXPLODED PRODUCT AND DIMENSIONS

English

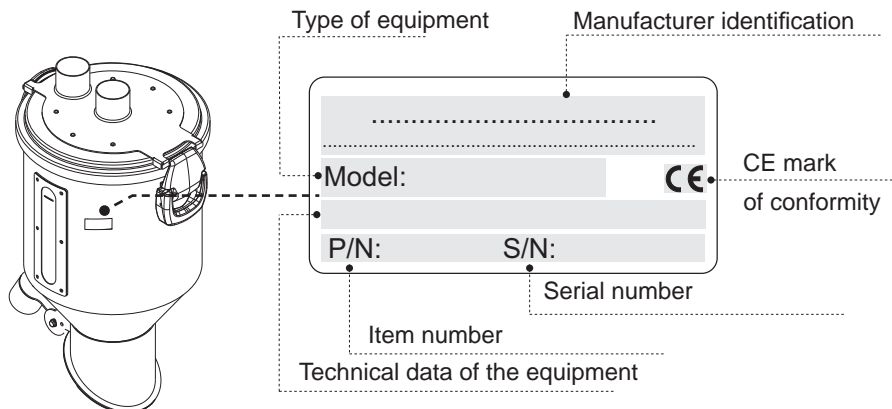




Weight Maxi Dispenser	Kg 12
Volumetric capacity	l 23
Content weight	Max Kg 20

3.1 Identification plate

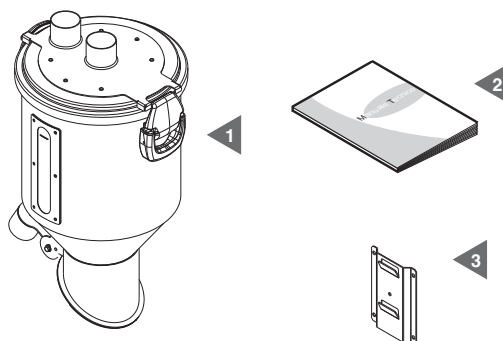
The CE identification plate is attached to the cover. Do not remove or damage the label.



4 PACKAGING CONTENT

After opening the packaging, do the inventory of what you have received, which will consist of:

- 1) a fuel dosing tank
- 2) an assembly, use and maintenance manual
- 3) a fixing plate
- 3) a wall bracket



Check that the product correspond to the one ordered and that no transportation damage is evident.

Should this not be the case, please contact immediately the seller.

5 PROPER USE OF THE PRODUCT

The Dispenser has been designed to be installed for the pneumatic transport of pellets or other biomass fuels with a medium-fine size; it has the task of dosing and releasing the fuel directly into the boiler tank. This product is suitable for working with biomass fuel such as pellets, olive pomace, M10 wood chips, crushed shells of dried fruit, corn, but it can not work with fuels having a very fine size, or having excessive dimensions and, in any case, having lengths over 40 mm or diameter greater than 15 mm.

It is recommended to use only certified ENplus A1 pellet.

To provide the job for which it was designed, the dispenser must be connected to Control Panel Drive and it must be installed within the pneumatic fuel transport system as an integral part of it, by appropriate piping.

6 INSTALLATION

It is the installer's responsibility to verify the presence of any risk of danger in the installation area and to determine the suitability in accordance with both the applicable laws and the product characteristics described in this manual.

The installer must also comply with the requirements of this manual as well as inform the user of the operation and maintenance of the installed products and report any dangers related to their use.

It is necessary to leave a free space of adequate size all around the product, in order to permit any repair, maintenance or inspection operation.

The product should not be exposed to atmospheric agents and should not be installed in areas subject to high humidity, possible flooding, high temperatures, dust and solvent presence.

6.1 Positioning

The Dispenser must be firmly attached to the boiler fuel tank in a position that does not impede an eventual manual filling of the tank itself.

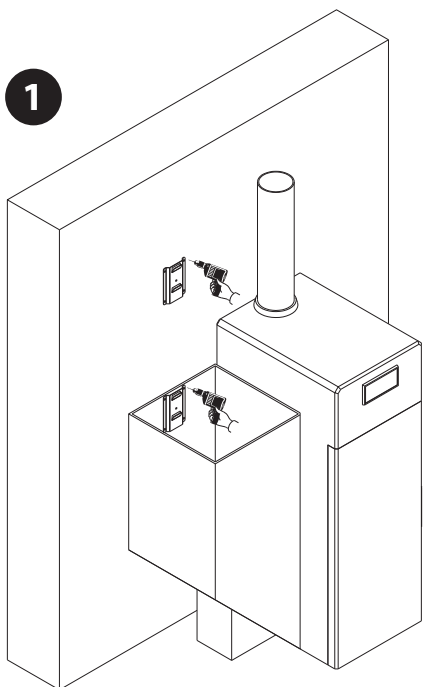
When fixing the Dispenser, keep in mind that its drained door should preferably be placed in the center of the boiler tank to allow the complete filling of the tank itself.

To ease the Dispenser fixing operation, the equipment includes the drilling template to do the right holes; it can be fixed on a strong support like walls or on the side of the tank itself.

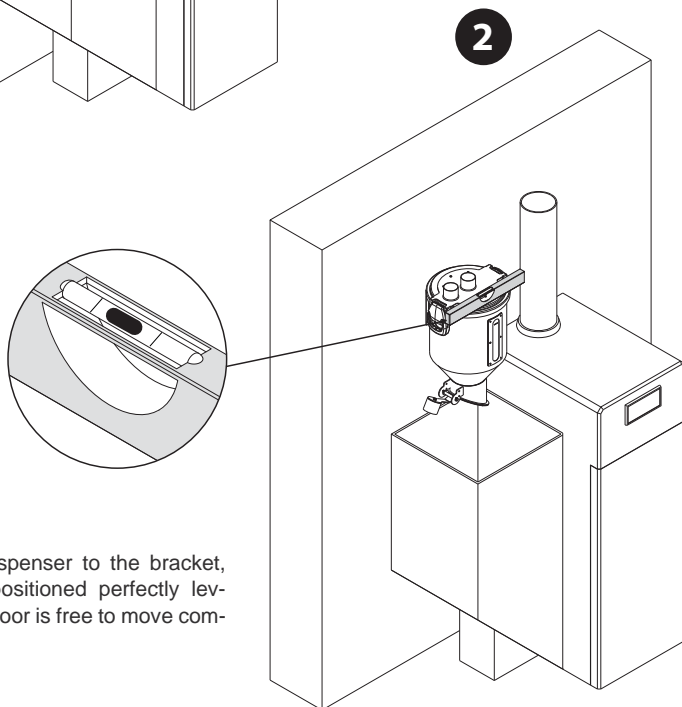
Keep in mind that during functioning the Maxi Dispenser is full of product, and its weight will increase appreciably.

The Dispenser must be installed in a perfectly horizontal position.

Make sure that when fixed, the Dispenser's door drain can make the full movement without any obstacle (see figures below).



Fix the fixing plate to the wall or alternatively to one side of the boiler tank.



Hang the Maxi Dispenser to the bracket, ensuring that it is positioned perfectly levelled and that the door is free to move completely.

6.2 Warning for installations on controlled pressure tanks

It is important to remind that pneumatic transport systems work modifying the state of pressures in the different components of the installation itself: in particular, during the functioning of our systems, the negative pressure inside the dispenser ranges from -0,080 to -0,24 bar (-1,16 to -3,48 psi).

Note: when the system is starting, an air suction from the pellet discharge flap placed on the bottom of the dispenser may occurs.

Afterwards, the same may happen during the dispenser filling phase, due to small wood particles snagged between the fuel outlet and the lower closing flap, which impede the perfect sealing. These leakages do not prejudice system operation, but they could change the negative pressure inside the boiler tank, with a risk for boiler safety.

Is it possible to fix the situation mainly by programming the working time of the fuel transfer system only when:

- A) the brazier of the boiler is switched off and cold
- B) the loading door of the tank is open
- C) the communication channel between the fuel tank and the boiler brazier is completely closed
- D) the smoke extraction fan of boiler is working at the max speed;
- E) on the boiler tank is present an electrical valve, of proper dimensions, connected to the fuel feeding transport system, which allows an easy compensation of the air sucked.

6.3 Connection to the pipe network

To connect the Dispenser to the fuel transport system, use two sections of anti-static hose \varnothing 50 mm with a suitable length to allow an easy removing of dispenser cover.

Fix the pipes to the Dispenser cover with Steel Clamps, then a copper wire section inside the flexible hoses should be stripped and put into contact with a grounding network, to avoid static current in the system.

The fuel transport pipe must be connected to the sleeve called "IN" while the air suction pipe must be connected to the sleeve labelled "OUT" in the center of the cover.

The weight of these pipes must not be burdened on the cover of the Dispenser, so the pipes must be anchored at a short distance to a solid base that guarantees the support.

The other ends of the pipes must be connected to the system, which can be made with antistatic flexible hose or steel pipes for the fuel transport section; while the section where the passage of the only air can occur can also be made in PVC.

All these materials are in the catalog.

7 PRINCIPLES OF OPERATION

The Dispenser is a part of the fuel transportation system, which also includes the vacuum unit, the control panel, the extraction system and the storage tank. The filling of the dispenser takes place through the suction of the air inside it, which leaves space to the fuel that is sucked in from the storage tank.

When the operation of the vacuum unit stops, the fuel falls for gravity into the underlying boiler; at the end of this operation, if necessary, the control panel restarts another dispenser filling cycle.

Operating cycles are started or interrupted when the fuel in the boiler tank reaches the level of the dispenser discharge door or, if a overflow sensor is installed in the tank itself, when this level is reached by the fuel.

7.1 Start up and use

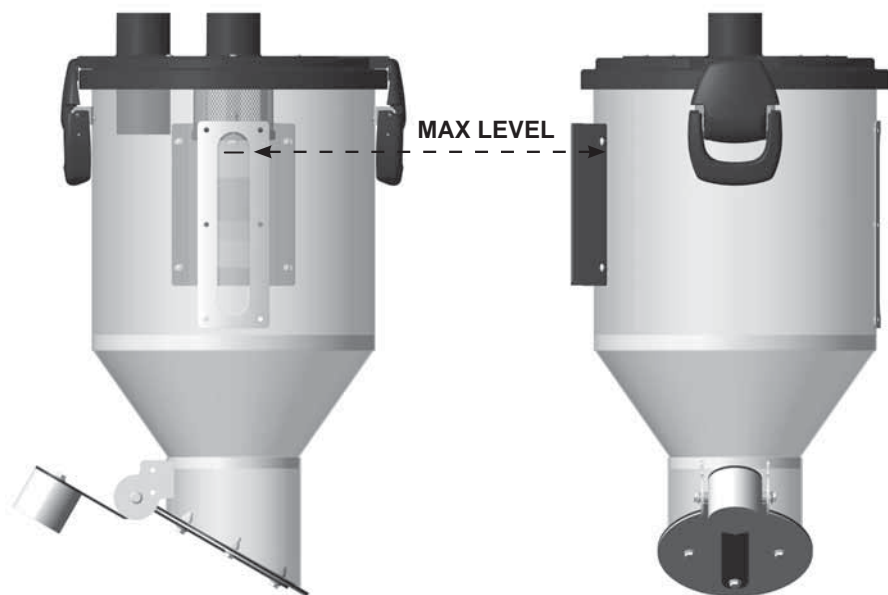
Before proceeding to the Dispenser start up, it is opportune to check that:

- it is firmly fixed and placed in a perfect horizontal position over the middle of the boiler tank that you want to feed
- the pipes of fuel and air are correctly and firmly fixed to the Dispenser cover;
- the discharge door moves completely and easily;
- all the electrical connections comply with the current laws, as well as the electric system which is connected to.

For an optimal filling settle as reference point the line on the sticker "MAX LEVEL" on the Maxi Dispenser.

During the running period, in case of filling of the Maxi Dispenser under this level, there won't be any consequence, whereas the filling to an higher quote , can originate flaws and noises in the functioning of the vacuum unit and obstruction in the fuel transport piping.

Thence we recommend to regulate in the appropriate way the functioning times of the system, taking care to verify than every time the fuel tank will be filled.



Now the system is ready to work; an additional potentiometer adjustment may be necessary if you change, even a little bit, the specific weight or type of the fuel which has to be transported. In these cases, it is sufficient to readjust the operating time of the vacuum unit so that it is appropriate to fill the fuel dispenser, at each cycle, to the level indicated by the "MAX LEVEL" adhesive (see figure above).

8 MAINTENANCE AND END-OF-LIFE

Before carrying out any maintenance operation, it is obligatory to disconnect the power supply cable from the main socket and to aerate the premises in which it is installed for at least 15 minutes.

Complex or long maintenance operations must be done out of fuel storage and heating unit premises.

Any maintenance and repair operation must be carried out by experienced personnel and authorized by the manufacturer.

In the absence of a specific maintenance plan, a complete product inspection is recommended for each filling of the fuel storage tank.

The checks to be carried out at least monthly are:

- remove any traces of dust from the mesh filter located inside
- clean the rubber inner part of the fuel discharge door

It is also advisable to thoroughly clean the fuel storage tank at least annually, in order to avoid dust accumulation and presence of foreign bodies.

8.1 End-of-life

The disposal of packaging, accessories and machine must be executed in accordance with applicable laws, ensuring the recycling of any of the core components.



SAFETY REQUIREMENTS for pellet storage tanks with capacity up to 10 t



Keep the doors closed. Access is permitted only to authorized personnel under the supervision of a person outside



Do not smoke and approach flames or other sources of ignition.



Danger of death due to high concentrations of carbon monoxide (CO) and lack of oxygen.



In the 4 weeks after the fuel filling, enter only with a CO detector.



Aerate the storage room for at least 15 minutes before entering and keep the door open during your permanence.



Ensure an adequate and permanent aeration of the storage room through vent covers, openings or fans.



Wounding risk for moving systems



Turn off the boiler at least one hour before the pellet is delivered.



Proceed to the filling according to the requirements of the boiler manufacturer and the pellet supplier.



Protect pellets from humidity



In case of fire suspect keep the front door and any other opening of the storage room close and call the firemen.

10 WARRANTY

PRODUCT LIMITED WARRANTY CONDITIONS

The Manufacturer guarantees to the original purchaser the absence of defects in material and workmanship of the product for the period stated, from the date of purchase. Except as prohibited by applicable law, this warranty is non transferable and it is limited to the original purchaser. The present warranty gives the buyer specific legal rights and the possibility to claim rights which can vary under local laws.

Read all warnings and instructions before using the product purchased.

The entire liability of the manufacturer and your exclusive remedy for any breach of warranty will be at the discretion of the Manufacturer:

(1) To repair or replace the product, or (2) refund the purchase price, provided that the product has been returned to the point of purchase, or such other place as may be specified by the manufacturer, with a copy of the sales receipt or detailed and dated receipt. The shipping and handling are not free of charge, except in cases where this is prohibited by applicable law.

To repair and replace the product, the manufacturer may, at their own discretion, use new, refurbished or used parts in good working condition. Any replacement product will be warranted for the remaining time of the original warranty period, or for any period of time that complies with the provisions of the current law. This warranty does not cover problems or damage resulting from (1) accident, abuse,

misapplication, repair, alteration or unauthorized disassembly; (2) maintenance operation, use which is not in accordance with the product instructions or connection to an improper voltage supply; or (3) use of consumables and spare parts which are not supplied by the manufacturer or authorized service center. Valid warranty claims are generally processed through the point of purchase of the product.

Please agree this detail with the retailer where you purchased the product.

The Warranty claims that cannot be processed through the point of purchase, as well as any other product related questions, should be addressed directly to the manufacturer. Addresses and contact information for customer support can be found at the web site.

Except as stated by relevant laws in force, any implied warranty or condition of merchantability or suitability for a particular purpose relating to this product is limited to the duration of the Limited Warranty period for the specific product purchased.

Some jurisdictions do not allow limitations on the duration of implied warranties or the exclusion or limitation of incidental or consequential damages, so the above limitation may not apply to you. This warranty gives you specific legal rights and you may have other rights that vary from state to state, or from jurisdiction to jurisdiction.

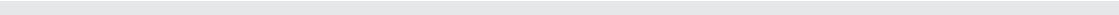
Consumers have legal rights under applicable national legislation governing the sale of consumer products. Such rights are not affected by the warranties in this Limited Warranty. No dealer, agent, or employee of the manufacturer is authorized to make any modification, extension or addition to this warranty.

11 CERTIFICATION

Declaration of absence of harmful substances

The manufacturer declares that their products and equipment are made with materials compliant with the current regulations regarding protection of health and the environment and does not contain substances classified as SVHC (Substance of Very High Concern) in accordance with Regulation EC 1907/2006 (REACH, or registration, evaluation, authorization and restriction of chemical substances).

Although in the working cycles of raw materials and our products such substances are not used, their presence in the size of p.p.m. (Parts per million) cannot be excluded due to micro-pollution of raw materials.



.....

.....

.....

.....

.....

.....

.....

.....

.....

.....

.....

.....

.....

.....

.....

.....

.....

.....

.....

.....

.....

.....

.....

MAXI DISPENSER TANK



F0920552

ADVANCE
Easy Moving 