

ADVANCE

Easy Moving 

15

ASSEMBLY, USE AND MAIN-
TENANCE MANUAL

CYCLONE SEPARATOR
TURBIX SMALL





INSTRUCTION MANUAL

- Type: Cyclone separator
- Model: Turbix Small
- Revision 1.0.0

CYCLONE SEPARATOR

INDEX

| | | |
|-----------|--|----|
| 1 | INTRODUCTION | 4 |
| | 1.1 Use of this manual | 4 |
| 2 | WARNINGS | 4 |
| | 2.1 Installer's responsibilities | 4 |
| 3 | TECHNICAL DATA, EXPLODED VIEW DRAWINGS AND DIMENSIONS | 5 |
| | 3.1 Identification plate | 6 |
| 4 | PACKAGING CONTENT | 6 |
| 5 | INTENDED USE AND PRODUCT DESCRIPTION | 7 |
| 6 | DUST INLET PIPE REVERSIBILITY | 8 |
| 7 | PIPE INSTALLATION AND CONNECTION | 8 |
| 8 | FIRST SWITCH-ON AND USE | 9 |
| 9 | MAINTENANCE AND END OF LIFE | 9 |
| | 9.1 End-of-life | 10 |
| 10 | WARRANTY | 11 |
| 11 | CERTIFICATION | 12 |

1 INTRODUCTION

Dear customer,
the manufacturer would firstly like to thank you for the choice you made in buying an our product, whose technical features will certainly meet Your needs.
Our products have been designed and manufactured in total compliance with the current regulations, by choosing the best materials to obtain durability and ease of use of the product.
We ask you, therefore, to read this manual carefully and completely, following strictly the instructions contained herein.

1.1 Use of this manual

The instruction manual is a document drawn up by the manufacturer and is part of the product: it integrates the specific rules of application and general rules for people, animals and objects safety. In the event that the product is resold, handed over, rented or sold to others, it must always be accompanied by this manual; therefore, it is recommended to use and keep it with care for the entire operative life of the product.

The main objective of this manual is to make known the proper and safe way to use the equipment. No part of this manual may be reproduced, copied, or shared in any way, without the written permission of the manufacturer.

The manufacturer reserves the right to make improvements or modifications to this manual and to the equipment at any time, without obligation to advise third parties.

2 WARNINGS

- Do not use the product for improper uses.
- This product must not be used by children or persons without the appropriate knowledge.
- Only use original spare parts.
- In order to be able to operate the product easily, it must be installed leaving a space around it completely free of any obstructions.
- This product can be installed on pneumatic conveying systems for granular fuels derived from biomass for other uses ask your seller for advice.
- Before first ignition, check that it is carefully installed.
- Never use the structure of the product as a supporting or fixing element for any other support or equipment.
- It is essential to ventilate the room where the product is installed when loading fuel into the tank.
- Remove the inspection doors only to carry out repairs and maintenance after disconnecting the power supply.
- The manufacturer disclaims all liability or warranty if the purchaser or anyone on his behalf makes any changes or adjustments, however slight, to the product purchased

2.1 Installer's responsibilities

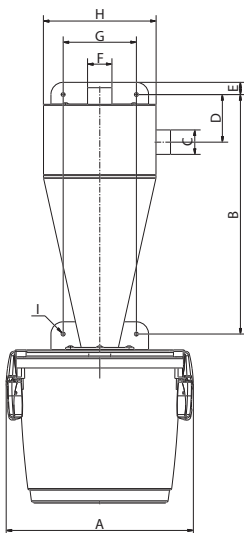
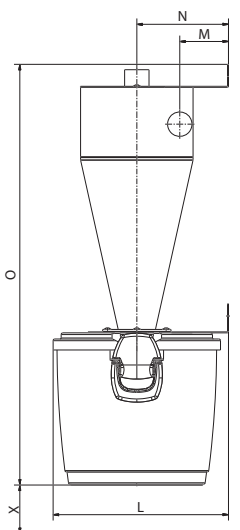
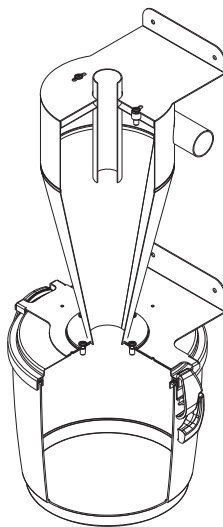
To ensure proper operation of the product, follow these guidelines:

- Only perform the activities described in these instructions
- Perform all activities in accordance with applicable regulations
- Explain to the user the operation and use of the product
- Explain to the user how to maintain the product
- Report to the user the potential dangers related to the use of the product

3 TECHNICAL DATA, EXPLODED VIEW DRAWINGS AND DIMENSIONS

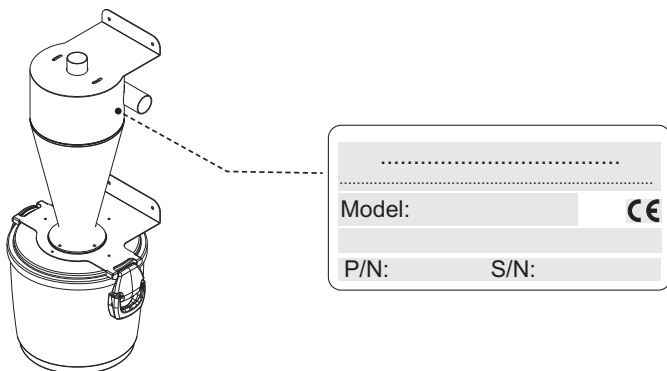
English

| Art. AP3460.50.01 | | |
|-------------------------|------|-----|
| Dust inlet/outlet | Ø mm | 50 |
| Dust container capacity | l | 21 |
| Weight | kg | 15 |
| Measurement A | mm | 385 |
| Measurement B | mm | 491 |
| Measurement C | Ø mm | 50 |
| Measurement D | mm | 980 |
| Measurement E | mm | 25 |
| Measurement F | Ø mm | 50 |
| Measurement G | Ø mm | 150 |
| Measurement H | Ø mm | 231 |
| Measurement I | R mm | 8 |
| Measurement L | mm | 360 |
| Measurement M | mm | 100 |
| Measurement N | mm | 188 |
| Measurement O | mm | 862 |
| Measurement X | mm | 100 |



3.1 Identification plate

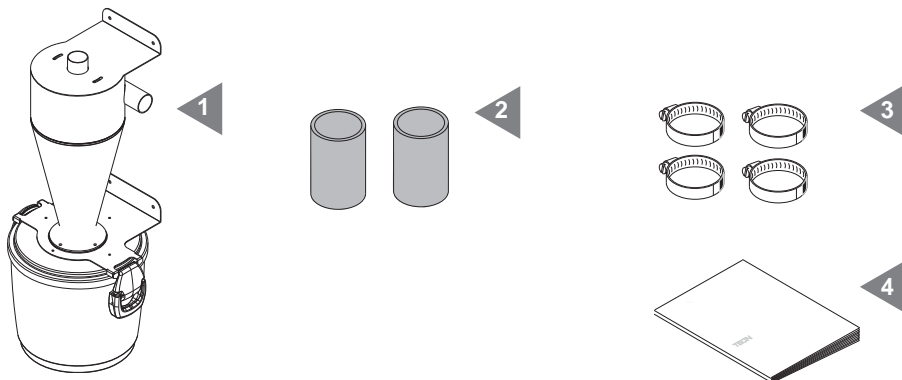
The CE identification plate is present. Do not remove or damage the plate..



4 PACKAGING CONTENT

The sale package also includes the set of accessories, consisting of the following components:

- 1) N°1 cyclone Separator
- 2) N°2 rubber sleeves for the connection to the pipe network
- 3) N°4 metal clamps for sleeve fastening
- 4) N°1 installation, user and maintenance manual



Verify that the Separator and the relevant accessories match the order, and that they have no visible damages caused by transport.

Should that not be the case, immediately inform the Dealer.

5 - INTENDED USE AND PRODUCT DESCRIPTION

The purpose of the separator is intercepting and trapping the dusts contained in the air flow used to convey fuels from biomasses, like wood pellets, olive stones, ground nut shells, etc...

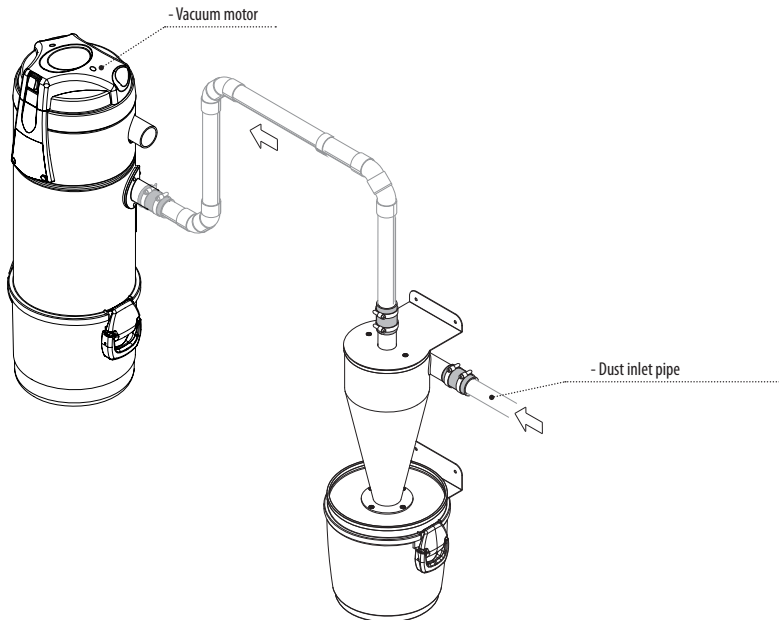
Thanks to its internal layout, the cyclone separator can intercept and separate the dusts contained in the air flowing from the fuel dosing unit to the vacuum motor.

Over 90% of dusts is intercepted by the separator; other dusts - fine and impalpable - may escape the separator; as a consequence, further filtering is required to ensure that the air flow is totally clean before it is released into the environment (see the available accessories in our catalogue).

Dusts are captured during flowing, and by inertia they drop into the bucket located at the base of the cyclone, where they gather up until they are disposed of.

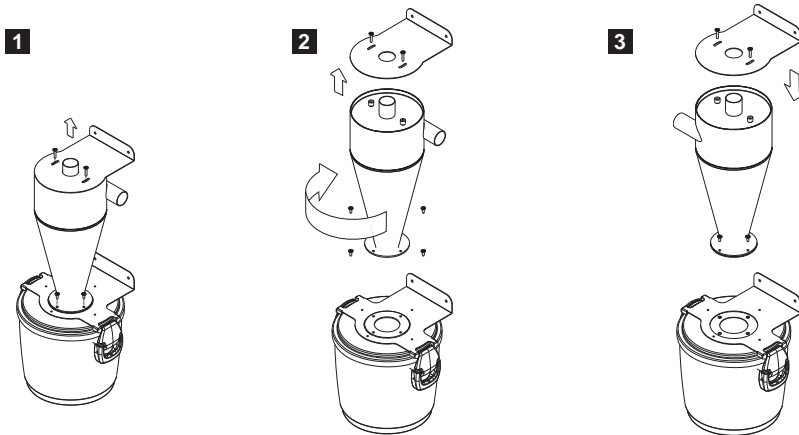
This operation ensures that the cartridge filters installed on the vacuum motors do not require frequent cleaning, thus prolonging their durability and operating life.

The separator must be installed in the pipe section that connects the dosing unit to the vacuum motor of the conveyor system.



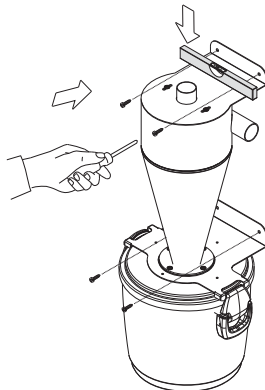
6 - DUST INLET PIPE REVERSIBILITY

The dust-rich airflow inlet pipe can be installed to the right or to the left of the separator, by a simple operation described in figures 1-2-3



7 - PIPE INSTALLATION AND CONNECTION

The separator must be fastened to a wall or to another firm support, using the preset and pre-drilled steel sheet fastening flanges.



Example wall fastening

When fastening the separator, take care to leave a gap of at least 100 mm between it and the ground, to be able to remove and empty the dust bucket.

The airflow inlet and outlet pipes, which both have a diameter of 50 mm, must be connected using the two supplied rubber sleeves; as an alternative, they can directly be connected through an antistatic hose; in both cases, the supplied steel clamps shall be firmly tightened on the junctions.

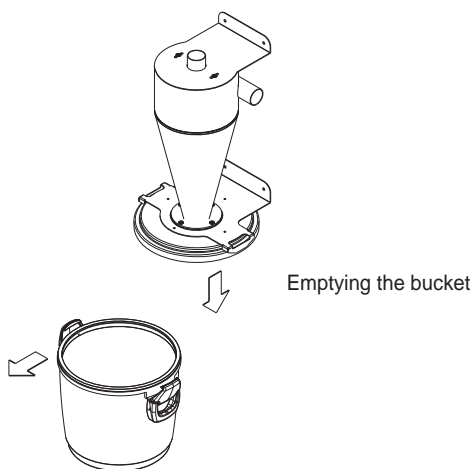
8 -FIRST SWITCH-ON AND USE

When switching on the pneumatic fuel conveyor system for the first time, make sure that the product is perfectly airtight, with particular reference to the pipe unions and to the bucket fastening flange. After a few operating cycles, check the residues that have gathered up on the bucket bottom, to determine how frequently it will have to be emptied.

9 -MAINTENANCE AND END OF LIFE

Periodically check the amount of dusts that has gathered up on the bucket bottom, and never let the level exceed $\frac{3}{4}$ of the total bucket capacity.

To remove the bucket, release the two handle hooks that keep it in contact with the separator, then unhook it.



After disposing of the content and before reinstalling the bucket, check that no residues have remained on the gasket and under the coupling flange, as they would compromise the sealing between separator and bucket; remove any residues, then properly hook the bucket.

The dusts that gather up in the bucket must be disposed of properly and in compliance with the local regulations in force.

9.1 End-of-life

The waste disposal of the packaging, accessories and appliance must be carried out pursuant to local standards in force, guaranteeing the recycling of the raw materials they are composed of.



10 WARRANTY

PRODUCT LIMITED WARRANTY CONDITIONS

The Manufacturer guarantees to the original purchaser the absence of defects in material and workmanship of the product for the period stated, from the date of purchase. Except as prohibited by applicable law, this warranty is non transferable and it is limited to the original purchaser. The present warranty gives the buyer specific legal rights and the possibility to claim rights which can vary under local laws.

Read all warnings and instructions before using the product purchased.

The entire liability of the manufacturer and your exclusive remedy for any breach of warranty will be at the discretion of the Manufacturer:

(1) To repair or replace the product, or (2) refund the purchase price, provided that the product has been returned to the point of purchase, or such other place as may be specified by the manufacturer, with a copy of the sales receipt or detailed and dated receipt. The shipping and handling are not free of charge, except in cases where this is prohibited by applicable law.

To repair and replace the product, the manufacturer may, at their own discretion, use new, refurbished or used parts in good working condition. Any replacement product will be warranted for the remaining time of the original warranty period, or for any period of time that complies with the provisions of the current law.

This warranty does not cover problems or damage resulting from (1) accident, abuse, misapplication, repair, alteration or unauthorized disassembly; (2) maintenance operation, use which is not in accordance with the product instructions or connection to an improper voltage supply; or (3) use of consumables and spare parts which are not supplied by the manufacturer or authorized service center.

Valid warranty claims are generally processed through the point of purchase of the product. Please agree this detail with the retailer where you purchased the product.

The Warranty claims that cannot be processed through the point of purchase, as well as any other product related questions, should be addressed directly to the manufacturer. Addresses and contact information for customer support can be found at the web.

Except as stated by relevant laws in force, any implied warranty or condition of merchantability or suitability for a particular purpose relating to this product is limited to the duration of the Limited Warranty period for the specific product purchased.

Some jurisdictions do not allow limitations on the duration of implied warranties or the exclusion or limitation of incidental or consequential damages, so the above limitation may not apply to you. This warranty gives you specific legal rights and you may have other rights that vary from state to state, or from jurisdiction to jurisdiction.

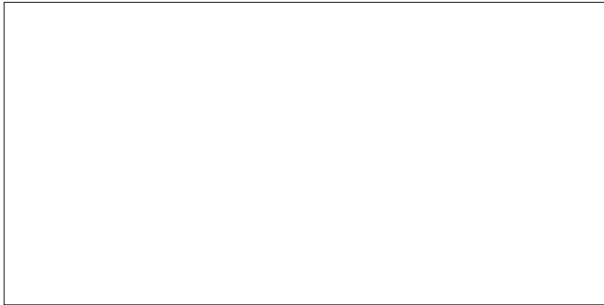
Consumers have legal rights under applicable national legislation governing the sale of consumer products. Such rights are not affected by the warranties in this Limited Warranty.

No dealer, agent, or employee of the manufacturer is authorized to make any modification, extension or addition to this warranty.

11 CERTIFICATION

Declaration of absence of harmful substances

The manufacturer declares that their products and equipment are made with materials compliant with the current regulations regarding protection of health and the environment and does not contain substances classified as SVHC (Substance of Very High Concern) in accordance with Regulation EC 1907/2006 (REACH, or registration, evaluation, authorization and restriction of chemical substances). Although in the working cycles of raw materials and our products such substances are not used, their presence in the size of p.p.m. (parts per million) cannot be excluded due to micro-pollution of raw materials.



F0920510.01

ADVANCE
Easy Moving 